



REC# #: 752659

RECORDED 5/8/2019 AT 1:11 PM BK# 2620 PG# 1701
Debra K. Lee, CLERK OF LARAMIE COUNTY, WY PAGE 1 OF 1

STATE OF WYOMING CORNER RECORD

(In compliance with the CORNER PERPETUATION AND FILING ACT, Wyoming Statutes, 1997 Section 33-29-140, et. seq., and the Rules and Regulations of the Board of Registrations for Professional Engineers and Professional Land Surveyors)

NORTH QUARTER CORNER SECTION 4, T. 17 N., R. 63 W., 6TH P.M., LARAMIE COUNTY, WYOMING

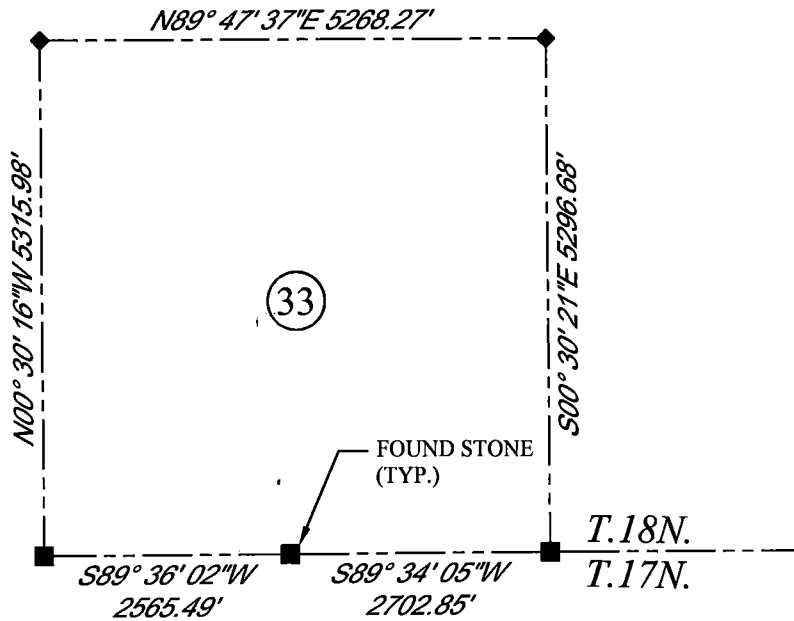
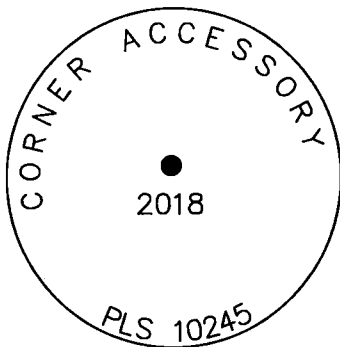
GLO: SET A SANDSTONE 16X8X6, 11 IN. DEEP, MARKED 1/4 ON NORTH SIDE FOR 1/4 SEC. COR.

FOUND: SET SANDSTONE, 1/4 MARKED ON THE NORTH FACE.



SCALE: 1" = 2000'
NORTH DETERMINED BY
G.P.S OBSERVATIONS

SET 3.25" ALUMINUM CAP ON
#5 REBAR, 7" ABOVE SURFACE
STAMPED AS SHOWN. REBAR
AND CAP ARE SET ON THE
EAST FACE OF FOUND STONE.



LEGEND:

- FOUND BLM CAP
- FOUND USFS CAP
- FOUND STONE
- FOUND PRIVATE MONUMENT
- ◆ CALCULATED POSITION
- ▲ SET MONUMENT (LS10245)
- SECTION LINE

DATE OF FIELD WORK: 8/22/2018 OFFICE REFERENCE: MERIDEN

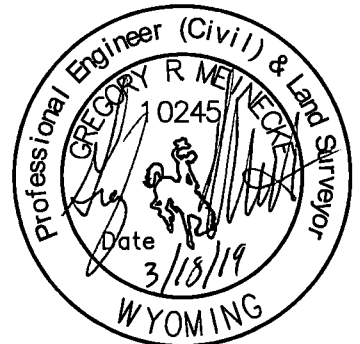
CROSS INDEX DIAGRAM

	1	2	3	4	5	6	7	8	9	10	11	12	13	14	15	16	17	18	19	20	21	22	23	24	25
A																									
B																									
C			6																						
D					5																				
E						4																			
F																									
G			7																						
H					8																				
J						9																			
K																									
L			18																						
M					17																				
N						16																			
O																									
P			19																						
Q					20																				
R						21																			
S																									
T			30																						
U					29																				
V						28																			
W																									
X			31																						
Y					32																				
Z						33																			
	1	2	3	4	5	6	7	8	9	10	11	12	13	14	15	16	17	18	19	20	21	22	23	24	25

WOOD
2615 AVIATION DRIVE
SHERIDAN, WY 82801
PH: 307-675-6400



THIS CORNER RECORD WAS
PREPARED BY ME OR UNDER
MY DIRECTION AND
SUPERVISION,
SEAL AND SIGNATURE



CORNER NAME: NORTH QUARTER SECTION: 4 T. 17 N., R. 63 W. ; 6TH P.M. CROSS-INDEX # A-11
SBRPELS/PLSW: MARCH 1994; PLSW JANUARY 1998